

HALLOWEEN SPECIAL CHICKEN LEGS

[HTTPS://WWW.PATREON.COM/TSFHIYIN](https://www.patreon.com/tsfshiyin) | ●

[HTTPS://TSFSHIYIN.FANBOX.CC](https://tsfshiyin.fanbox.cc) | 🍻



HMM



I'M BORED

HEY, DO YOU
REMEMBER WHAT
HAPPENED LAST YEAR?

WHAT DO
YOU MEAN?



YOU KNOW
WHAT I MEAN

THE GIRL WHO WAS
BEHAVING WEIRD LAST
YEAR AFTER HALLOWEEN

A young man with short, dark brown hair and large, expressive brown eyes is shown in a close-up. He is wearing a dark grey school uniform jacket with two gold buttons on the lapel, a white collared shirt, and a red tie. His right hand is held out flat, palm up, in a gesture of surprise or questioning. The background is a slightly blurred office or classroom setting with a desk, a printer, and some papers.

THE GIRL WHO
WAS SAYING SHE
WAS A GUY BEFORE?

WHAT ABOUT HER?



WHAT IF SHE SAID
THE TRUTH?

AS IF THAT
WAS TRUE



HOW ABOUT WE
TRY IT THEN?

OR ARE
YOU SCARED?

YEAH

I'M SUPER
SCARED TO
TURN INTO
A GIRL

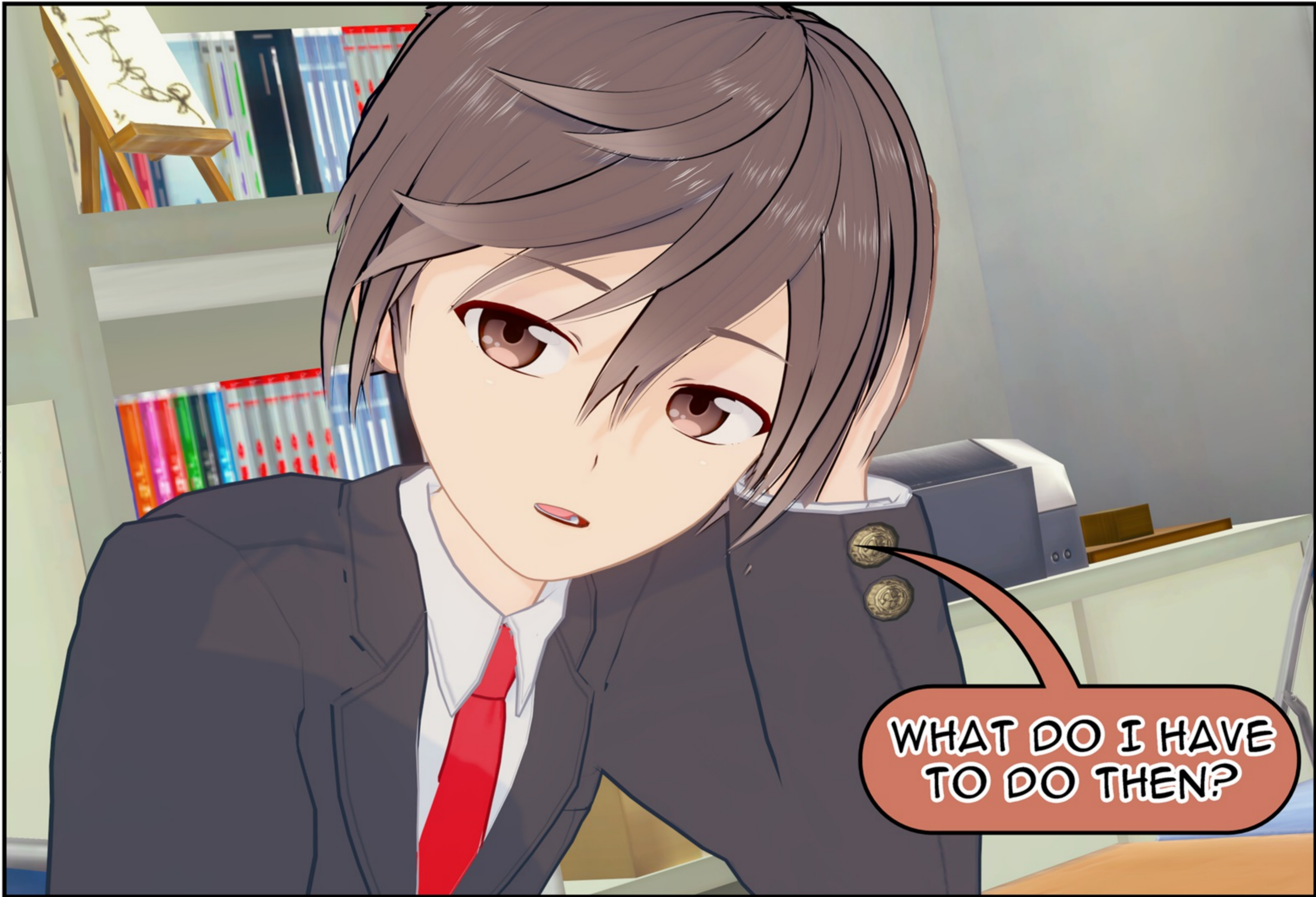


IT'S SETTLED THEN



HAH ...

FINE ...



WHAT DO I HAVE
TO DO THEN?



ONLY 2 THINGS
MATTER



IT ONLY WORKS
DURING HALLOWEEN
NIGHT

A young man with short, layered blue hair and bright blue eyes. He is wearing a dark grey suit jacket, a white collared shirt, and a red necktie. He is making a hand gesture with his right hand, showing three fingers (index, middle, and ring) extended upwards, while the thumb and pinky are tucked in. The background is a simple grey gradient with some faint lines suggesting a wall or ceiling.

AND YOU HAVE TO
SAY A SPECIAL SPELL

"CHICKEN LEGS
CHICKEN LEGS
GIVE ME EGGS"



YOU'RE JOKING,
RIGHT?

A blue-haired anime character with a serious expression, wearing a dark suit, white shirt, and red tie. A speech bubble next to them says "I'M NOT JOKING".

I'M NOT
JOKING



I'LL THINK ABOUT IT

TIME TO GO HOME

FINALLY DONE
WITH HOUSEWORK ...





WHAT SHOULD
I DO NOW?



A young man with short, dark brown hair and a blue t-shirt is sitting on a ledge. He has a thoughtful or slightly nervous expression on his face. A speech bubble next to him contains the text "GUESS I'LL TRY IT". The background shows a simple room with a grey wall and a yellow handrail.

GUESS
I'LL TRY IT

A young woman with short, layered brown hair and large brown eyes is looking at a black smartphone held in her right hand. She is wearing a blue t-shirt. The background shows a window with light-colored curtains and a wooden lattice structure on the left. Two speech bubbles are present: one above her head and one to her right.

LET'S SEE

IT'S MIDNIGHT



HUH ...

I'M REALLY
DOING THIS



HE SAID ONLY
2 THINGS MATTER

HALLOWEEN NIGHT
AND THE SPELL

WELL THEN

A young man with short, layered brown hair and brown eyes is shown from the chest up. He is wearing a dark blue t-shirt. He has a thoughtful or slightly nervous expression, with his mouth slightly open. The background consists of a light-colored wall and a window with horizontal wooden blinds. A speech bubble is positioned above his head, and another is to his right.

EHM ...

THE SPELL ...

CHICKEN LEGS
CHICKEN LEGS
GIVE ME EGGS





HAH ...

WHY DID I EVEN
BELIEVE IT FOR
A SECOND?



SERIOUSLY?

ANOTHER ONE?!



COME HERE AND
IT WILL BE QUICK





GET OVER HERE



NOW!

O-O-KAY ...

フレイム
天竺麻用
調剤機
火災注意
取下注意

引越しの
マルバツ

TSFShiyin



W-WHO ARE YOU?

STOP



STAY STILL



EHM ...

WHAT ARE YOU-



?!

HIYA!

ZASSI HON

TSFShiyin

ARRGHHH!





W-WHY ...



TSFSHYIN

I HOPE YOU'RE
THE LAST ONE

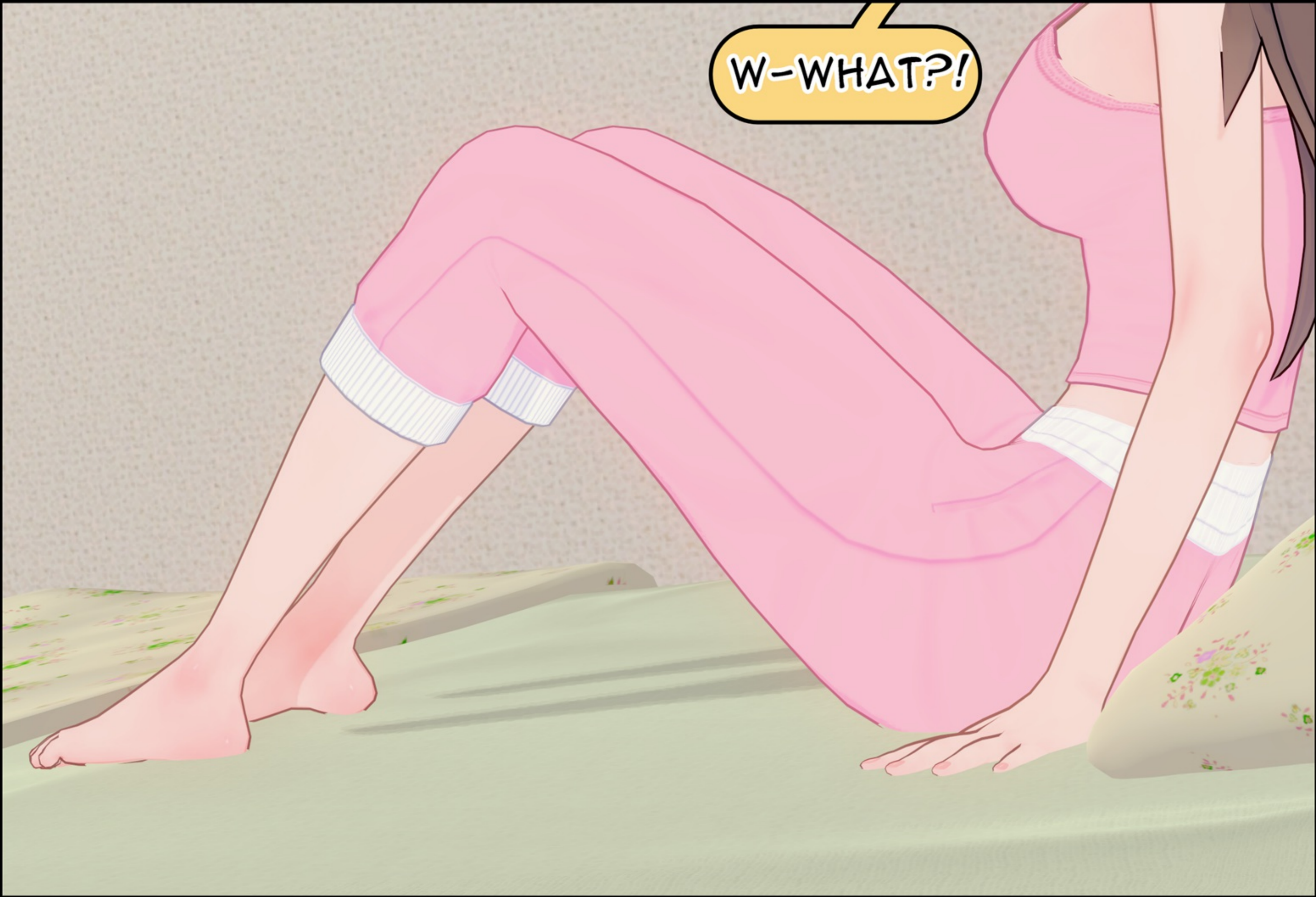






HUH?!

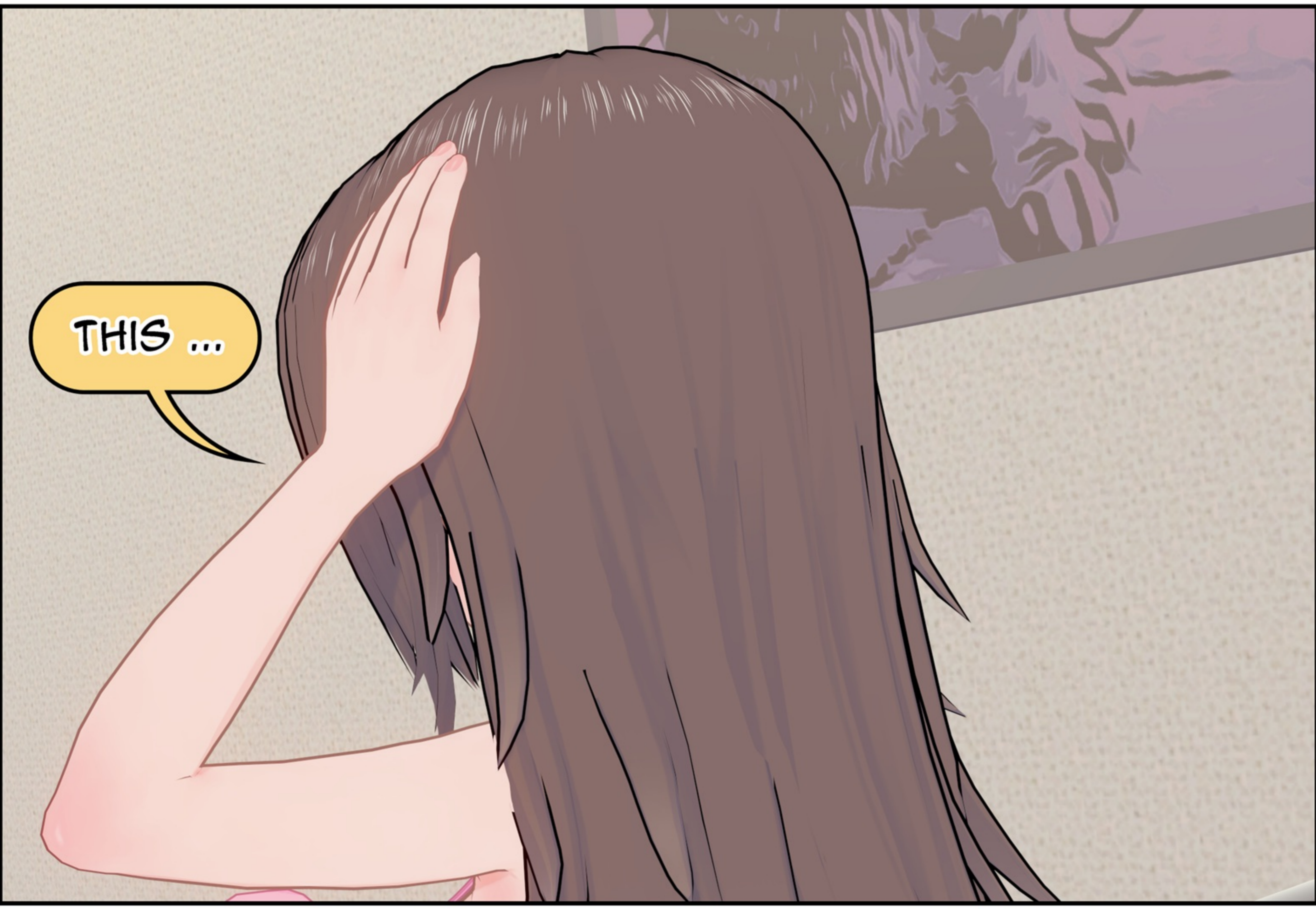
W-WHAT?!



WAIT WAIT ...



THIS ...



... CAN'T BE



A woman with dark hair, wearing a pink spaghetti-strap dress, is sitting on a bed. She is looking down at her feet, which are resting on a light green surface. Her feet are positioned in a way that shows the soles of her feet. The bed has a light green floral patterned pillow and a grey metal railing. A yellow speech bubble with a black outline is positioned to the right of her head, containing the text "WHAT IS GOING ON HERE?".

WHAT IS GOING
ON HERE?



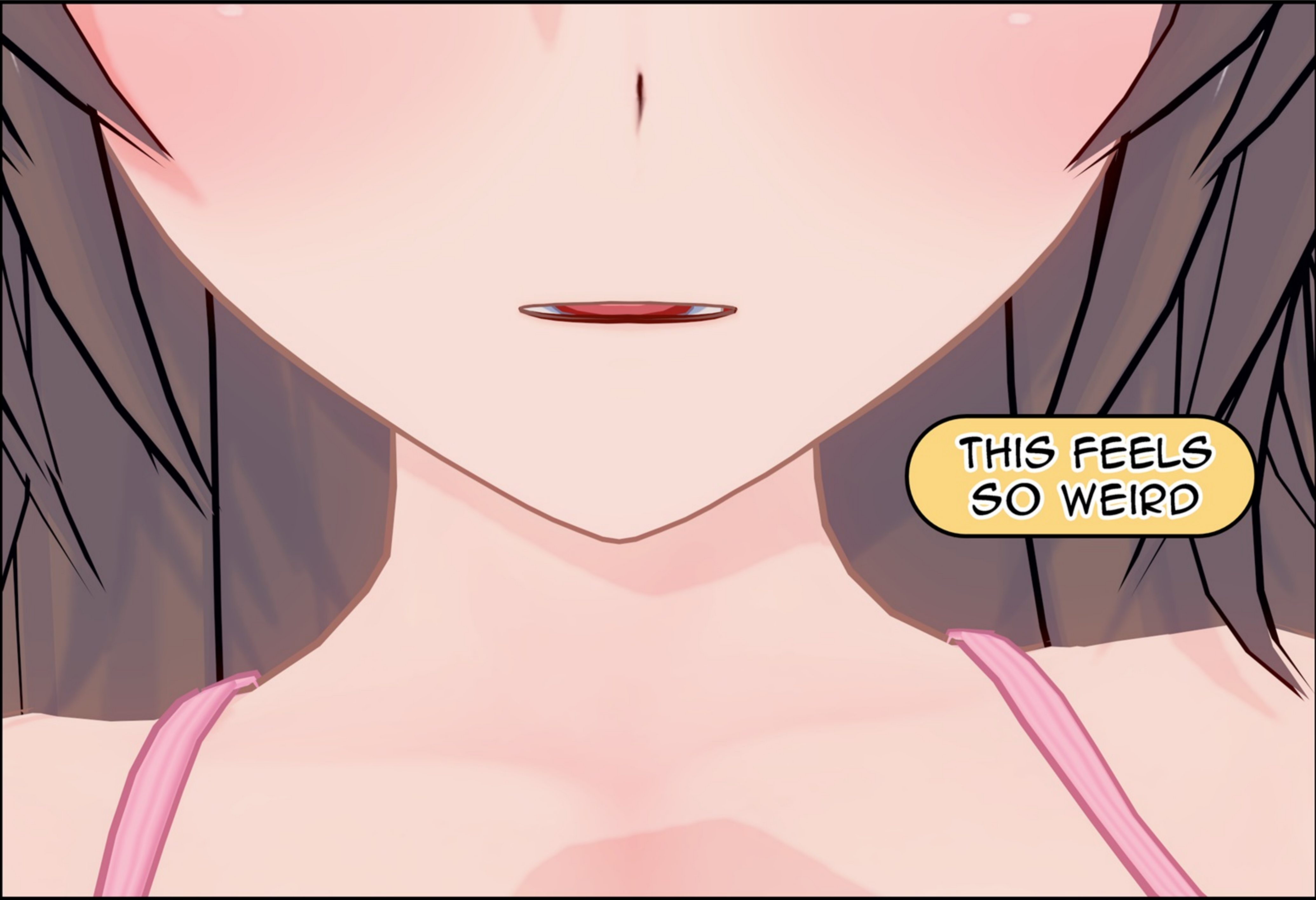
THIS ISN'T
MY ROOM



AND I'M NOT
MYSELF ...

AND WHY AM
I A GIRL?

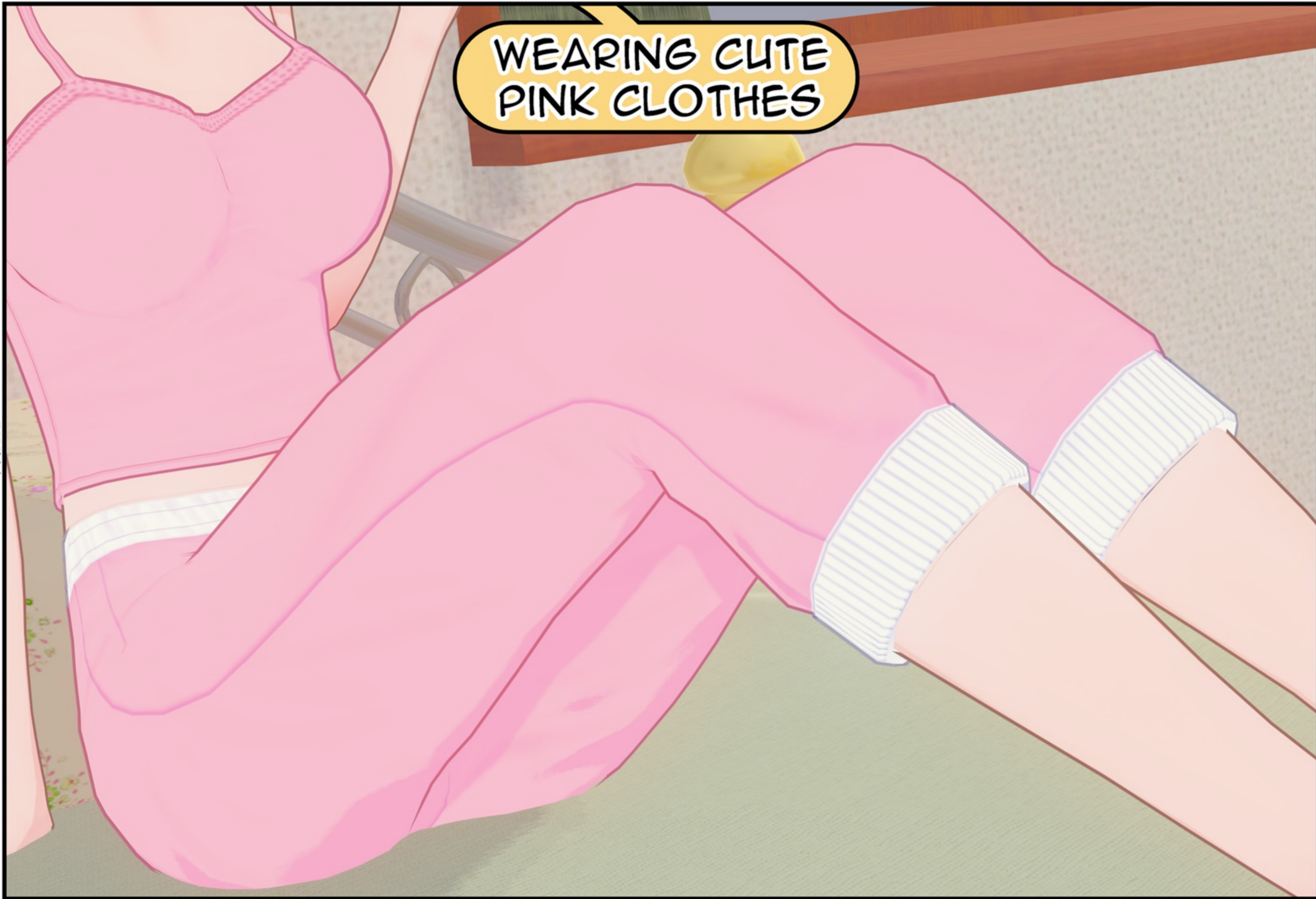
THIS FEELS
SO WEIRD



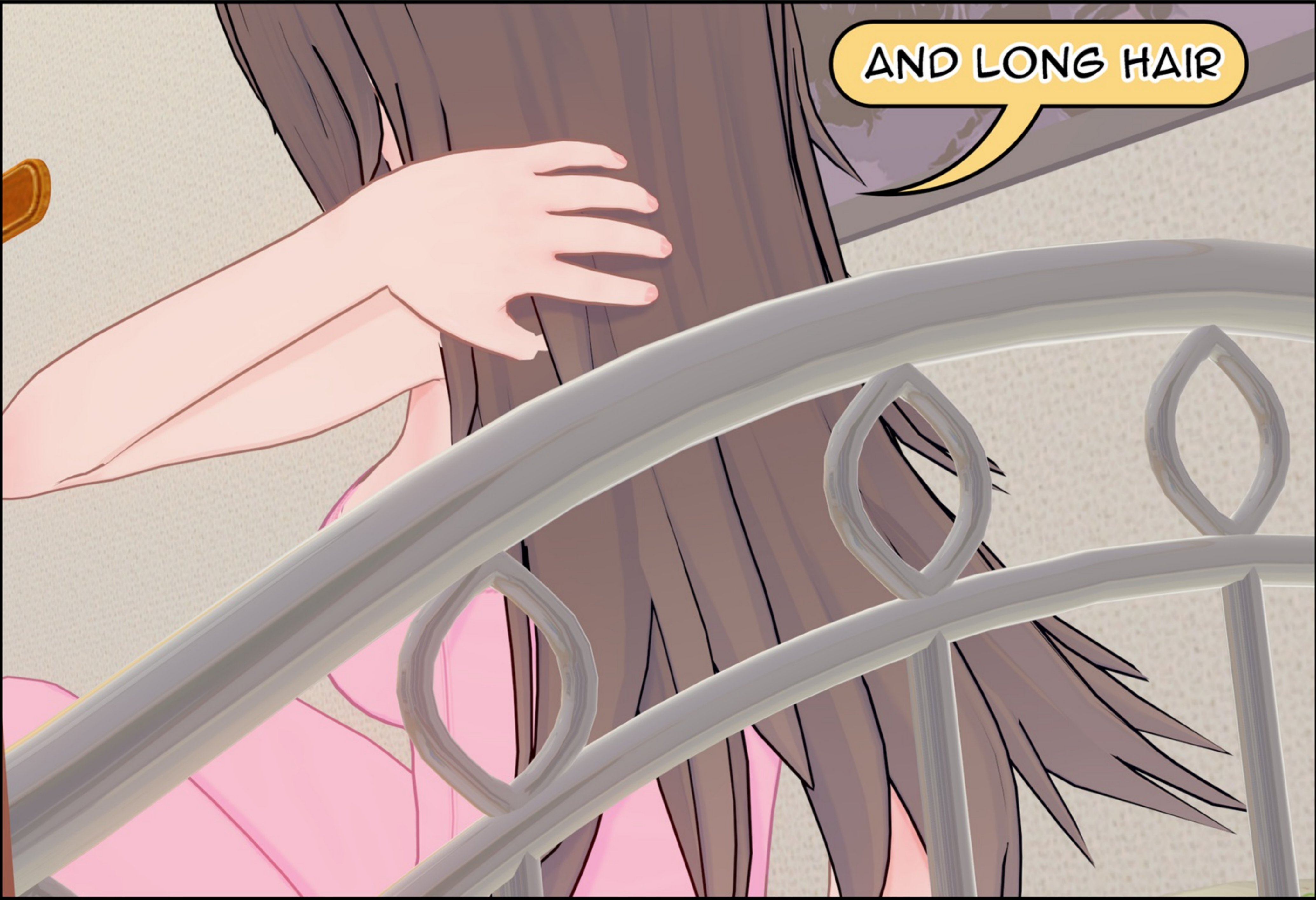
SLIM LEGS



WEARING CUTE
PINK CLOTHES



AND LONG HAIR



MHM ...

A person's legs are shown from the knees down, wearing pink pants and white socks. They are sitting on a green sofa. The background is a light-colored wall with a floral pattern. The floor is wooden. Two yellow speech bubbles are present, one above the other, containing text.

I DON'T SEE
A MIRROR

MAYBE A PHONE?

A pink smartphone is lying on a white, wrinkled bedsheet. The phone has several stickers: a panda face, a strawberry, and some text that includes "smart phone dx" and "SOO CUTE".

OH, THERE IS ONE
RIGHT HERE WITH
CUTE STICKERS ON IT

IS THAT MINE?

LET'S TAKE
IT FOR NOW



ACTUALLY

I LIKE THIS DESIGN

IT LOOKS
REALLY CUTE~





AAAH!

WHAT AM
I SAYING

BUT LOOKING AT IT

IT'S SUPER GIRLY,
BUT FOR SOME REASON,
I DON'T MIND IT



A-ANYWAYS

SOO ♥ CUTE →



OH, IT UNLOCKS
WITH MY FINGERPRINT

LET'S SEE ...

C-CUTE ...



I'M REALLY
A CUTE GIRL ...



IT'S SOFT
UNLIKE MY
OLD SKIN



AND THESE
LIPS ...

A person wearing a pink long-sleeved top and a pink skirt is sitting on a light green surface. They are holding a white smartphone in their right hand. The person's midriff is visible, showing a small red mark. The background is a simple grey wall and a light green floor with some colorful floral patterns.

**BUT WHAT'S
NEXT?**

**I DON'T KNOW
SOMEONE WITH
THIS FACE ...**

RANDOM K-POP
SONG PLAYING





EH?!

SOMEONE IS
CALLING ME



... 2306,
ISN'T THAT AKIYAMA'S
PHONE NUMBER?

BUT WHY IS IT
SAVED AS "BF"?

DON'T TELL ME
HE IS DATING
THIS CUTE GIRL?





HIKARU!

H-HELLO?

I DID THE CHALLENGE
AND I REALLY TURNED
INTO A GIRL!

A young woman with dark, shoulder-length hair and bangs is shown from the chest up. She is wearing a pink spaghetti-strap top and is holding a silver mobile phone to her ear with her right hand. Her expression is one of surprise or concern, with wide eyes and a slightly open mouth. The background is a simple, light-colored wall with some faint, dark patterns on the left side.

OOOHHH!~

H-HUH?

SOUNDS LIKE YOU
DID THE CHALLENGE
AS WELL~



WAIT A
SECOND!

YOU'RE SAYING
I TURNED INTO A GIRL

EH, WHAT ELSE?

I THOUGHT I BECAME
A RANDOM CUTE GIRL

A woman with long dark hair, wearing a pink strapless top and a pink skirt, is crawling on a green field. She is wearing white striped underwear. Her hands are on the ground, and her feet are also on the ground. The background is a simple grey wall and a green field with some small flowers.

OH?~ SO YOU
THINK YOU'RE CUTE?~

YOU KNOW WHAT,
I'LL VISIT YOU NOW~

I'M ON MY WAY~

HUH? WAIT

AH, HE HUNG UP





SO I'M NOT A
RANDOM CUTE GIRL ...

INSTEAD, I TURNED
INTO A CUTE GIRL



OH RIGHT, BEFORE
I FORGET IT

THAT RINGTONE
SOUNDS GREAT~



WAIT, THAT WAS
K-POP? WAS IT
ALWAYS THAT GOOD?

OH, MY WHOLE
PLAYLIST IS FULL
WITH K-POP

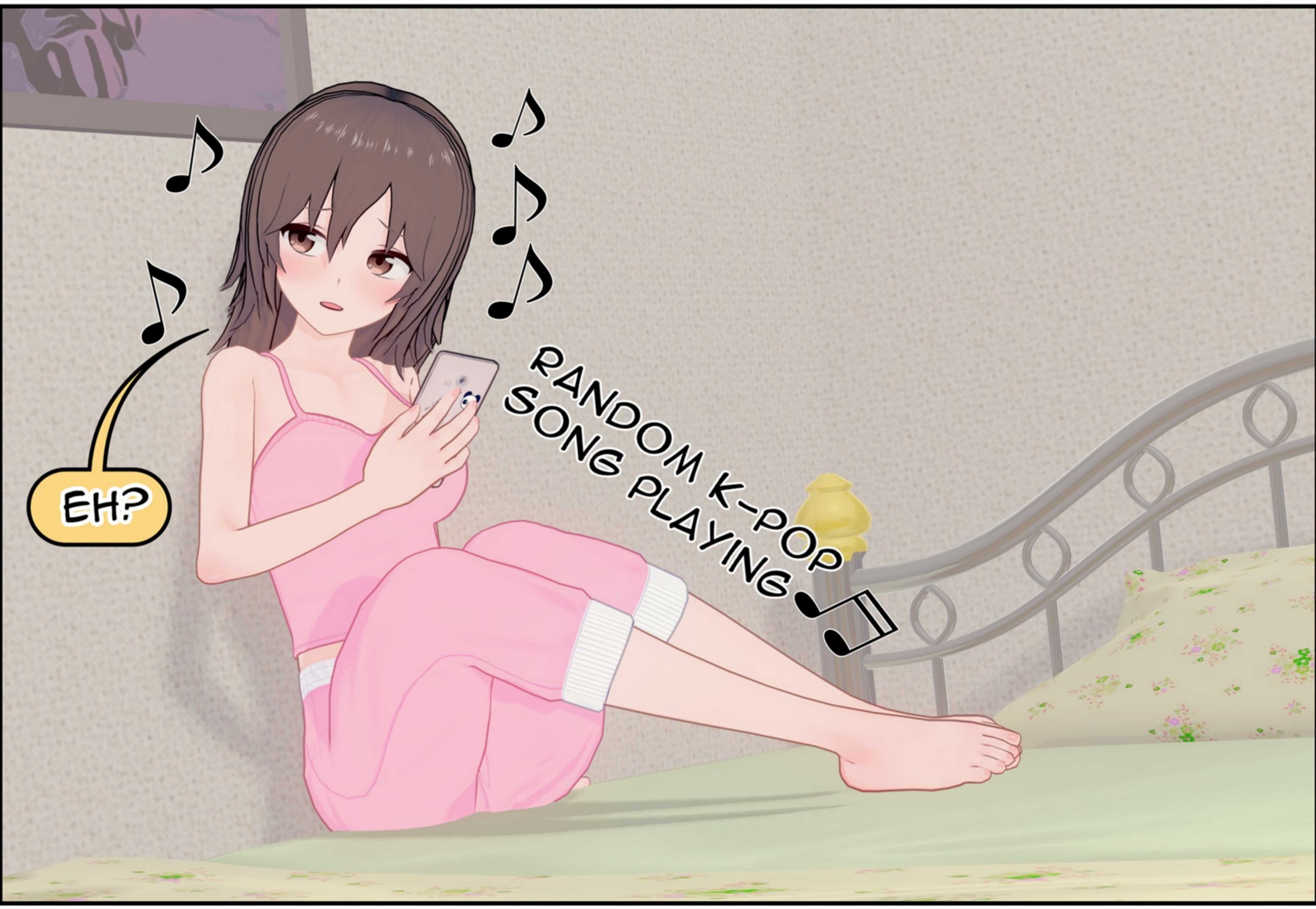
HIKARU!~



I'M HERE!~

LET ME SEE
THE CUTE GIRL~





EH?

RANDOM K-POP
SONG PLAYING



... YOU WEREN'T LYING, HUH ...

BUT ...
ARE YOU LISTENING
TO K-POP MUSIC?

T-THAT'S ...





SERIOUSLY ...
IF YOU BEHAVE
LIKE THAT ...

IT WILL BE REALLY
HARD FOR ME
TO RESIST THE URGE
OF TEASING YOU~



I DON'T KNOW
WHY I DID THAT

BUT I STARTED
LISTENING TO
K-POP AND WAS
REALLY ENJOYING IT



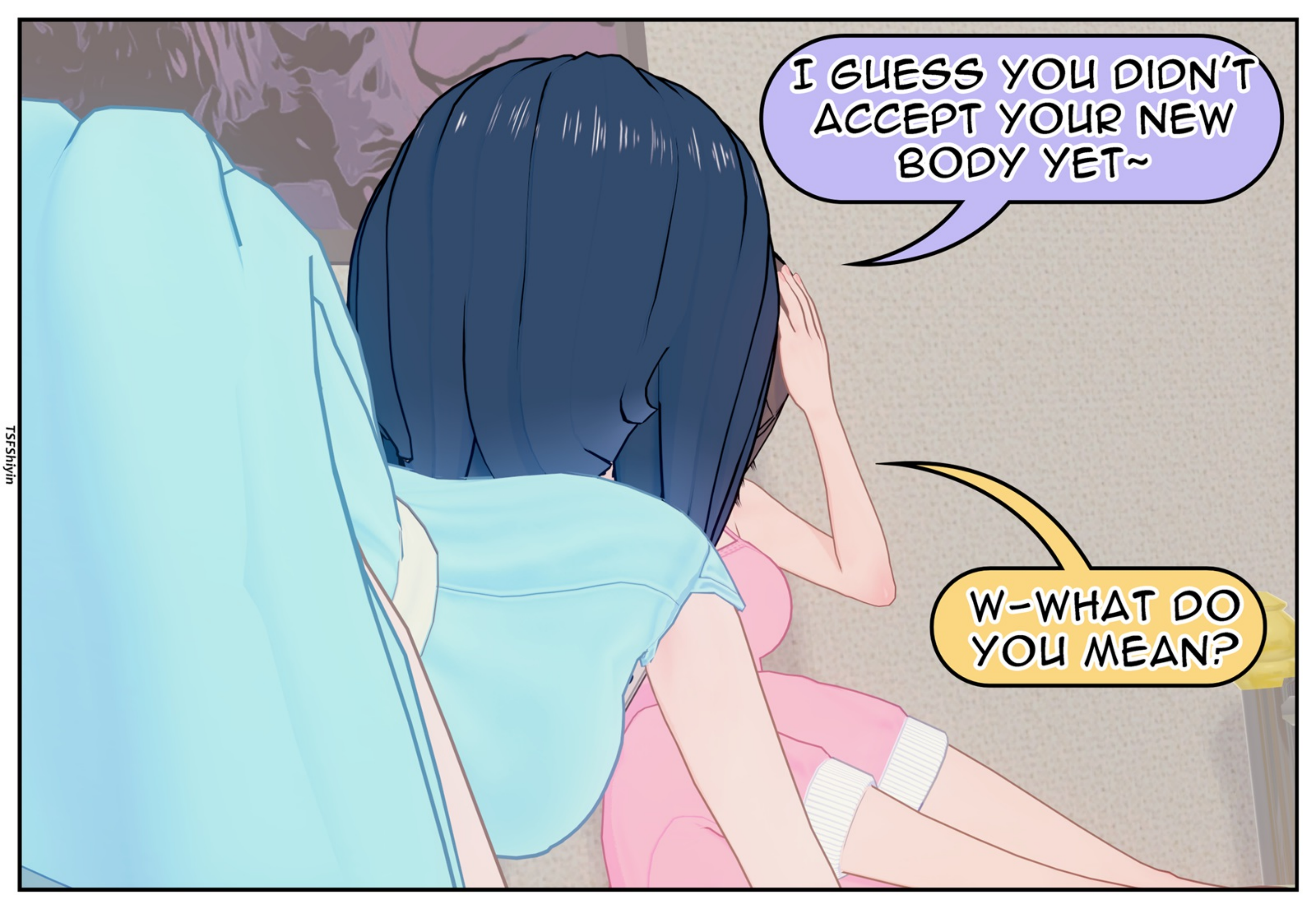
THAT'S FINE~
YOU WON'T BELIEVE
HOW MY ROOM LOOKS
NOW



NOT TO MENTION,
I'M WEARING A DRESS
RIGHT NOW~

BUT STILL ...





I GUESS YOU DIDN'T
ACCEPT YOUR NEW
BODY YET~

W-WHAT DO
YOU MEAN?



I'LL HELP YOU~

LEAVE EVERYTHING
TO ME, OKAY?~



I'LL BE GENTLE~